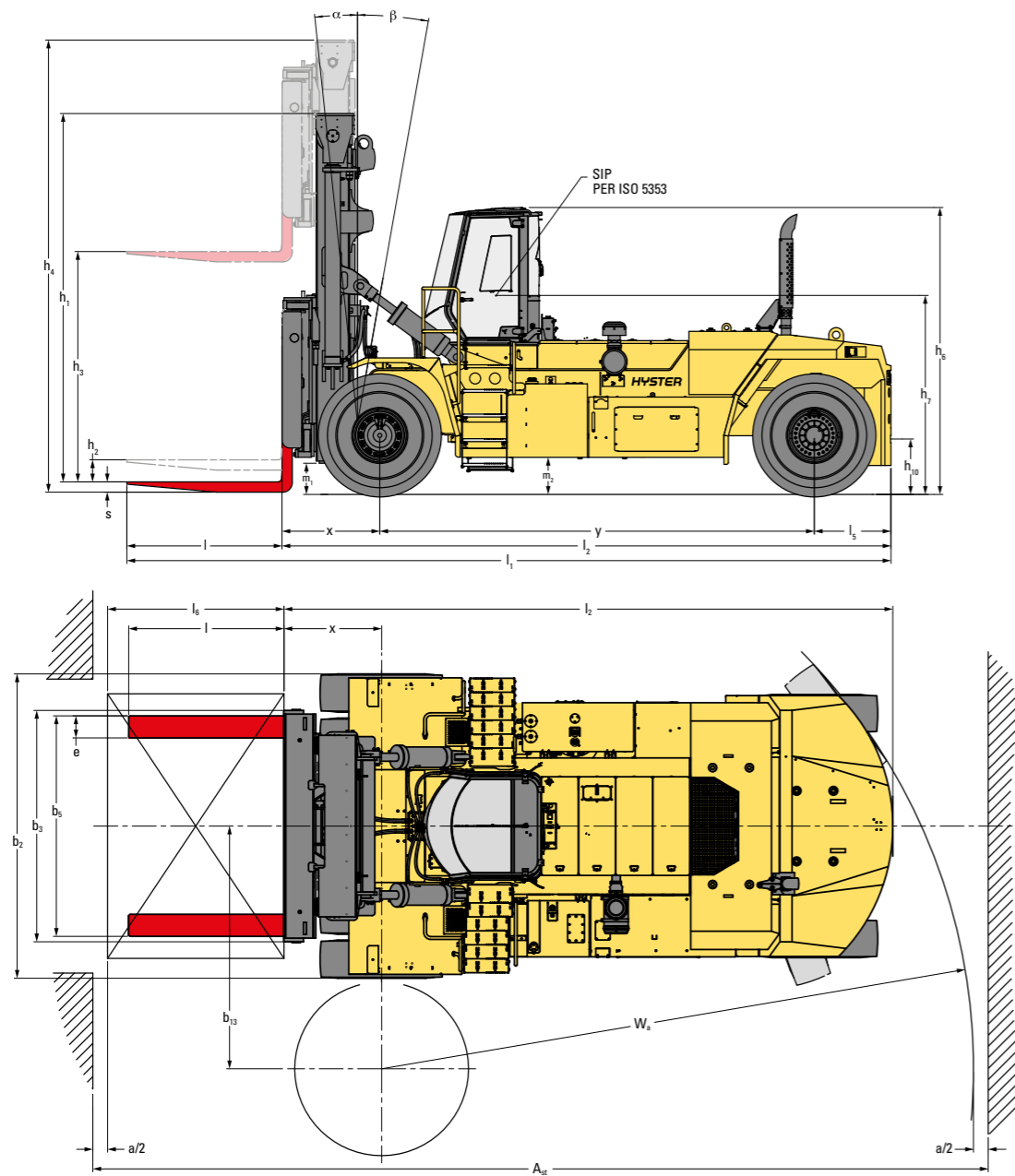


H36-48XD-12 SERIES



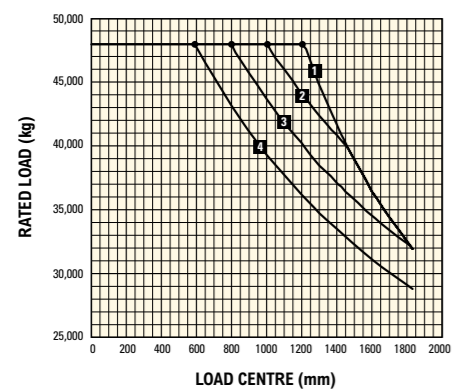
HEAVY DUTY FORKLIFT PRODUCT TECHNICAL GUIDE



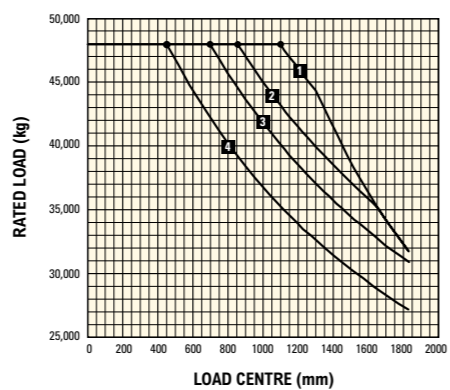


CAPACITY RATINGS

STANDARD CARRIAGE WITH FORK POSITIONING



PIN TYPE SIDE SHIFT FRAME CARRIAGE WITH FORK POSITIONING



H36XDS 12 RATED CAPACITY KG@1200 MM LOAD CENTRE

	Lift height	Lowered height	Freelif height	Extended height	Mast tilt Fwd/Bwd	Capacity standard carriage	Capacity sideshift carriage
	$h_s + s$ (mm)	h_1 (mm)	h_2 (mm)	h_2 (mm)	α/β (°)	Q (kg)	Q (kg)
2 STAGE NFL	4,267	5,183	0	7,317	6 / 10	36,000	34,340
	7,010	6,555	0	10,060	6 / 10	36,000	33,890
	8,534	7,317	0	11,584	6 / 10	35,120	32,970
	9,144	7,622	0	12,194	6 / 10	34,720	32,590
	9,754	7,927	0	12,804	6 / 10	34,210	32,180
	12,650	9,454	0	15,779	15 / 15	TBA	TBA

H40XDS 12 RATED CAPACITY KG@1200 MM LOAD CENTRE

	Lift height	Lowered height	Freelif height	Extended height	Mast tilt Fwd/Bwd	Capacity standard carriage	Capacity sideshift carriage
	$h_s + s$ (mm)	h_1 (mm)	h_2 (mm)	h_2 (mm)	α/β (°)	Q (kg)	Q (kg)
2 STAGE NFL	4,267	5,183	0	7,317	6 / 10	40,000	39,000
	7,010	6,555	0	10,060	6 / 10	40,000	38,550
	8,534	7,317	0	11,584	6 / 10	40,000	38,280
	9,144	7,622	0	12,194	6 / 10	40,000	37,870
	9,754	7,927	0	12,804	6 / 10	39,750	37,460
	12,650	9,454	0	15,779	15 / 15	TBA	TBA

H44XDS 12 RATED CAPACITY KG@1200 MM LOAD CENTRE

	Lift height	Lowered height	Freelif height	Extended height	Mast tilt Fwd/Bwd	Capacity standard carriage	Capacity sideshift carriage
	$h_s + s$ (mm)	h_1 (mm)	h_2 (mm)	h_2 (mm)	α/β (°)	Q (kg)	Q (kg)
2 STAGE NFL	4,267	5,183	0	7,317	6 / 10	44,000	41,980
	7,010	6,555	0	10,060	6 / 10	44,000	41,530
	8,534	7,317	0	11,584	6 / 10	43,700	41,260
	9,144	7,622	0	12,194	6 / 10	43,600	41,160
	9,754	7,927	0	12,804	6 / 10	43,150	41,730
	12,650	9,454	0	15,779	15 / 15	TBA	TBA

H48XDS 12 RATED CAPACITY KG@1200 MM LOAD CENTRE

	Lift height	Lowered height	Freelif height	Extended height	Mast tilt Fwd/Bwd	Capacity standard carriage	Capacity sideshift carriage
	$h_s + s$ (mm)	h_1 (mm)	h_2 (mm)	h_2 (mm)	α/β (°)	Q (kg)	Q (kg)
2 STAGE NFL	4,267	5,183	0	7,317	6 / 10	48,000	46,560
	7,010	6,555	0	10,060	6 / 10	48,000	46,110
	8,534	7,317	0	11,584	6 / 10	48,000	45,840
	9,144	7,622	0	12,194	6 / 10	48,000	45,740
	9,754	7,927	0	12,804	6 / 10	47,710	45,310
	12,650	9,454	0	15,779	15 / 15	TBA	TBA

H40XD 12 RATED CAPACITY KG@1200 MM LOAD CENTRE

	Lift height	Lowered height	Freelif height	Extended height	Mast tilt Fwd/Bwd	Capacity standard carriage	Capacity sideshift carriage
	$h_s + s$ (mm)	h_1 (mm)	h_2 (mm)	h_2 (mm)	α/β (°)	Q (kg)	Q (kg)
2 STAGE NFL	4,267	5,183	0	7,317	6 / 10	40,000	38,350
	7,010	6,555	0	10,060	6 / 10	40,000	37,900
	8,534	7,317	0	11,584	6 / 10	40,000	37,700
	9,144	7,622	0	12,194	6 / 10	39,600	37,200
	9,754	7,927	0	12,804	6 / 10	39,250	36,750

H44XD 12 RATED CAPACITY KG@1200 MM LOAD CENTRE

	Lift height	Lowered height	Freelif height	Extended height	Mast tilt Fwd/Bwd	Capacity standard carriage	Capacity sideshift carriage
	$h_s + s$ (mm)	h_1 (mm)	h_2 (mm)	h_2 (mm)	α/β (°)	Q (kg)	Q (kg)
2 STAGE NFL	4,267	5,183	0	7,317	6 / 10	44,000	42,500
	7,010	6,555	0	10,060	6 / 10	44,000	42,000
	8,534	7,317	0	11,584	6 / 10	44,000	41,750
	9,144	7,622	0	12,194	6 / 10	44,000	41,650
	9,754	7,927	0	12,804	6 / 10	43,600	41,200

H48XD 12 RATED CAPACITY KG@1200 MM LOAD CENTRE

	Lift height	Lowered height	Freelif height	Extended height	Mast tilt Fwd/Bwd	Capacity standard carriage	Capacity sideshift carriage
	$h_s + s$ (mm)	h_1 (mm)	h_2 (mm)	h_2 (mm)	α/β (°)	Q (kg)	Q (kg)
2 STAGE NFL	4,267	5,183	0	7,317	6 / 10	48,000	46,200
	7,010	6,555	0	10,060	6 / 10	48,000	45,750
	8,534	7,317	0	11,584	6 / 10	48,000	45,450
	9,144	7,622	0	12,194	6 / 10	48,000	45,350
	9,754	7,927	0	12,804	6 / 10	47,650	44,900

H36XDS12 / H40XDS12 / H44XDS12 / H48XDS12 SPECIFICATIONS

		HYSTER						
		H36XDS12	H40XDS12	H44XDS12	H48XDS12			
GENERAL	1-1	Manufacturer	HYSTER					
	1-2	Model designation	H36XDS12	H40XDS12	H44XDS12			
	1-3	Powertrain / drivetrain	Diesel					
	1-4	Operator type	Seated					
WEIGHT	1-5	Load capacity at load centre, nominal (1) STD / SS	Q kg	36,000 / 34,500	40,000 / 39,000	44,000 / 42,600	48,000 / 46,500	
	1-6	Load centre	C ₁ mm	1,200				
	1-8	Load distance, centre of drive axle to fork (2) STD / SS	x mm	1,252 / 1,328				
	1-9	Wheelbase	y mm	5,385				
WHEELS	2-1	Service weight	kg	52,446	55,586	57,816	60,816	
	2-2	Axle loading with load, front / rear at c ₁	kg	83,385 / 5,062	89,319 / 6,268	95,178 / 6,639	101,730 / 7,086	
	2-3	Axle loading without load, front / rear at c ₁	kg	31,012 / 21,435	31,126 / 24,460	31,166 / 26,650	31,899 / 28,917	
	3-1	Tyre type	Type	Pneumatic				
DIMENSIONS	3-2	Tyre size, front	18.00 - 25 40PR					
	3-3	Tyre size, rear	18.00 - 25 40PR					
	3-5	Number of wheels, front / rear (x = driven wheels)	#	x4 / 2				
	3-6	Tread, front	b ₁₀ mm	3,113				
	3-7	Tread, rear	b ₁₁ mm	3,077				
	4-1	Mast tilt, forward / backward	α/β degrees	6 / 10				
	4-2	Height, mast lowered (Unladen)	h ₁ mm	5,156				
	4-3	Freelift	h ₂ mm	0				
	4-4	Lift Height (Bottom of Forks)	h ₃ mm	4,267				
	4-5	Height, mast extended	h ₄ mm	7,290				
	4-7-1	Height of overhead guard (closed cab)	h ₅ mm	3,904				
	4-7-2	Height of overhead guard (closed cab w/ strobe light) w/o AC / w/AC	h ₆ mm	3,999 / 4,029				
	4-7-4	Height of overhead guard (closed cab w/ work lights)	h ₆ mm	4,060				
	4-8	Seat height to SIP, ISO 5353	h ₇ mm	2,680				
	PERFORMANCE - STAGE IIIA	4-12	Coupling height	h ₁₀ mm	750			
		4-17	Overhang, rear	l ₅ mm	1,053			
4-19		Overall length (2) STD / SS	l ₁ mm	10,132 / 10,208				
4-20		Length to face of forks (2) STD / SS	l ₂ mm	7,692 / 7,768				
4-21		Overall width truck	s/e/l mm	4,233				
4-22		Fork dimensions	type	140 x 300 x 2440				
4-23		Carriage type	type	Standard carriage w/ Hydraulic fork positioning				
4-23-1		Carriage type (optional)	type	Apron sideshift carriage w/ Hydraulic fork positioning				
4-24		Carriage Width	mm	3,150				
4-25		Width over forks min / max	b ₂ mm	1,666 / 3,008				
4-30		Side Shift	b _{1,20} mm	-305 / +305				
4-31		Ground clearance, laden, below mast	b _{1,40} mm	371				
4-32		Ground clearance, centre of wheelbase	l ₄ mm	452				
4-33		Load Size	m ₁ mm	2,400 / 2,400				
PERFORMANCE - STAGE V		4-34-1	Aisle Width (a = 0) (2) STD / SS	m ₂ mm	11,132 / 11,208			
		4-34-2	Aisle Width (a = 10%) (2) STD / SS	Ast ₂₀ mm	12,245 / 12,329			
	4-34-3	Aisle Width (a = 200) (2) STD / SS	Ast ₂₀ mm	11,332 / 11,408				
	4-35	Outside turning radius	W _a mm	7,480				
	4-36	Internal turning radius (centre of radius to centreline truck)	b ₁₃ mm	3,011				
	5-1	Travel speed, with / without load (3)	km/h	25 / 25				
	5-1-1	Travel speed, with / without load, backwards	km/h	19 / 20				
	5-2	Lifting speed, with / without load	m/s	0.26 / 0.31				
PERFORMANCE - STAGE V	5-2-1	Lifting speed, with 70% load	m/s	0.30				
	5-3	Lowering speed with / without load	m/s	0.40 / 0.50				
	5-5	Drawbar pull - 1 mph (1.6 km/h), with / without load	kN	301 / 307	300 / 307	299 / 306	298 / 306	
	5-6	Drawbar pull - max, with / without load	kN	312 / 318	310 / 317	309 / 317	308 / 316	
	5-7	Gradeability - 1 mph (1.6 km/h), with / without load	%	37 / 38	34 / 36	31 / 34	29 / 33	
	5-8	Gradeability - max, with / without load	%	39 / 38	35 / 36	33 / 34	30 / 33	
	5-1	Travel speed, with / without load (3)	km/h	25 / 25				
	5-1-1	Travel speed, with / without load, backwards	km/h	19 / 20				
PERFORMANCE - STAGE V	5-2	Lifting speed, with / without load	m/s	0.26 / 0.31				
	5-2-1	Lifting speed, with 70% load	m/s	0.30				
	5-3	Lowering speed with / without load	m/s	0.40 / 0.50				
	5-5	Drawbar pull - 1 mph (1.6 km/h), with / without load	kN	271 / 277	270 / 277	269 / 276	268 / 276	
	5-6	Drawbar pull - max, with / without load	kN	282 / 288	281 / 288	280 / 287	279 / 287	
	5-7	Gradeability - 1 mph (1.6 km/h), with / without load	%	33 / 38	30 / 36	28 / 34	26 / 33	
	5-8	Gradeability - max, with / without load	%	34 / 38	31 / 36	29 / 34	27 / 33	

(1) See WWRP for capacity of sideshift carriage i.c.w 18x33 tyres
 (2) Add 100mm to values of SS carriage for SS carriage i.c.w 18x33 tyres
 (3) Factory speed limit set to 25km/h

H40XD12 / H44XD12 / H48XD12 SPECIFICATIONS

		HYSTER					
		H40XD12	H44XD12	H48XD12			
GENERAL	1-1	Manufacturer	HYSTER				
	1-2	Model designation	H40XD12	H44XD12			
	1-3	Powertrain / drivetrain	Diesel				
	1-4	Operator type	Seated				
WEIGHT	1-5	Load capacity at load centre, nominal (1) STD / SS	Q kg	40,000 / 38,500	44,000 / 42,600	48,000 / 46,500	
	1-6	Load centre	C ₁ mm	1,200			
	1-8	Load distance, centre of drive axle to fork (2) STD / SS	x mm	1,252 / 1,328			
	1-9	Wheelbase	y mm	5,385			
WHEELS	2-1	Service weight	kg	52,903	56,043	57,473	
	2-2	Axle loading with load, front / rear at c ₁	kg	87,761 / 5,143	93,256 / 6,518	99,123 / 6,350	
	2-3	Axle loading without load, front / rear at c ₁	kg	31,153 / 21,750	31,258 / 24,785	31,195 / 26,279	
	3-1	Tyre type	Type	Pneumatic			
DIMENSIONS	3-2	Tyre size, front	18.00 - 25 40PR				
	3-3	Tyre size, rear	18.00 - 25 40PR				
	3-5	Number of wheels, front / rear (x = driven wheels)	#	x4 / 2			
	3-6	Tread, front	b ₁₀ mm	3,113			
	3-7	Tread, rear	b ₁₁ mm	3,077			
	4-1	Mast tilt, forward / backward	α/β degrees	6 / 10			
	4-2	Height, mast lowered (Unladen)	h ₁ mm	5,156			
	4-3	Freelift	h ₂ mm	0			
	4-4	Lift Height (Bottom of Forks)	h ₃ mm	4,267			
	4-5	Height, mast extended	h ₄ mm	7,290			
	4-7-1	Height of overhead guard (closed cab)	h ₅ mm	3,904			
	4-7-2	Height of overhead guard (closed cab w/ strobe light) w/o AC / w/AC	h ₆ mm	3,999 / 4,029			
	4-7-4	Height of overhead guard (closed cab w/ work lights)	h ₆ mm	4,060			
	4-8	Seat height to SIP, ISO 5353	h ₇ mm	2,680			
	PERFORMANCE - STAGE IIIA	4-12	Coupling height	h ₁₀ mm	750		
		4-17	Overhang, rear	l ₅ mm	1,053		
4-19		Overall length (2) STD / SS	l ₁ mm	10,647 / 10,723			
4-20		Length to face of forks (2) STD / SS	l ₂ mm	8,207 / 8,283			
4-21		Overall width truck	s/e/l mm	4,233			
4-22		Fork dimensions	type	140 x 300 x 2440			
4-23		Carriage type	type	Standard carriage w/ Hydraulic fork positioning			
4-23-1		Carriage type (optional)	type	Apron sideshift carriage w/ Hydraulic fork positioning			
4-24		Carriage Width	mm	3,150			
4-25		Width over forks min / max	b ₂ mm	1,666 / 3,008			
4-30		Side Shift	b _{1,20} mm	-305 / +305			
4-31		Ground clearance, laden, below mast	b _{1,40} mm	371			
4-32		Ground clearance, centre of wheelbase	l ₄ mm	452			
4-33		Load Size	m ₁ mm	2,400 / 2,400			
PERFORMANCE - STAGE V		4-34-1	Aisle Width (a = 0) (2) STD / SS	m ₂ mm	11,702 / 11,778		
		4-34-2	Aisle Width (a = 10%) (2) STD / SS	Ast ₂₀ mm	12,872 / 12,956		
	4-34-3	Aisle Width (a = 200) (2) STD / SS	Ast ₂₀ mm	11,902 / 11,978			
	4-35	Outside turning radius	W _a mm	8,050			
	4-36	Internal turning radius (centre of radius to centreline truck)	b ₁₃ mm	3,298			
	5-1	Travel speed, with / without load (3)	km/h	25 / 25			
	5-1-1	Travel speed, with / without load, backwards	km/h	19 / 20			
	5-2	Lifting speed, with / without load	m/s	0.26 / 0.31			
PERFORMANCE - STAGE V	5-2-1	Lifting speed, with 70% load	m/s	0.30			
	5-3	Lowering speed with / without load	m/s	0.40 / 0.50			
	5-5	Drawbar pull - 1 mph (1.6 km/h), with / without load	kN	3010 / 307	299 / 307	298 / 306	
	5-6	Drawbar pull - max, with / without load	kN	311 / 318	310 / 317	309 / 317	
	5-7	Gradeability - 1 mph (1.6 km/h), with / without load	%	35 / 38	32 / 36	30 / 34	
	5-8	Gradeability - max, with / without load	%	36 / 38	33 / 36	31 / 34	
	5-1	Travel speed, with / without load (3)	km/h	25 / 25			
	5-1-1	Travel speed, with / without load, backwards	km/h	19 / 20			
PERFORMANCE - STAGE V	5-2	Lifting speed, with / without load	m/s	0.26 / 0.31			
	5-2-1	Lifting speed, with 70% load	m/s	0.30			
	5-3	Lowering speed with / without load	m/s	0.40 / 0.50			
	5-5	Drawbar pull - 1 mph (1.6 km/h), with / without load	kN	270 / 277	269 / 277	268 / 276	
	5-6	Drawbar pull - max, with / without load	kN	281 / 288	280 / 288	279 / 287	
	5-7	Gradeability - 1 mph (1.6 km/h), with / without load	%	31 / 38	29 / 36	27 / 34	
	5-8	Gradeability - max, with / without load	%	32 / 38	30 / 36	28 / 34	

(1) See WWRP for capacity of sideshift carriage i.c.w 18x33 tyres
 (2) Add 100mm to values of SS carriage for SS carriage i.c.w 18x33 tyres
 (3) Factory speed limit set to 25km/h

GENERAL		HYSTER			
1-1	Manufacturer	HYSTER			
1-2	Model designation	H36-48XD(S)12			
1-3	Powertrain / drivetrain	Diesel			
ENGINE		Cummins / X12		Mercedes-Benz / OM470	
7-1	Engine manufacturer / model	Cummins / X12		Mercedes-Benz / OM470	
7-1a	EPA Tier Compliance	Stage IIIA		Stage V	
7-2	Engine power - rated	kW	250 @ 2100	237 @ 1900	
7-3-1	Engine torque @ rpm (1.min)	N-m	1,674 @ 1400	1,700 @ 1300	
7-4	Number of cylinders / displacement	# / cm ³	6 / 11,800	6 / 10,700	
7-6	Fuel consumption according to VDI cycle	l/h	On request		
7-8	Alternator output	Amps	110	150	
7-9	Electrical system voltage	V	24		
7-10	Battery voltage, rated capacity	V / Ah	24 / 105		
DRIVE		Torque Converter			
8-1	Type of drive unit	Type	Torque Converter		
8-2	Transmission manufacturer / type	Type	Spicer Off-Highway TE-30		
8-2-1	Transmission speeds forward / backward	#	5 / 3		
8-3	Drive axle manufacturer / type	Type	Kessler D102PL341/528-NLB		
8-11	Service brake	Type	Oil immersed (wet) disc		
8-12	Parking brake	Type	Dry disc on drive axle		
MISC		22.5			
10-1	Operating pressure for attachments	MPa	22.5		
10-2	Oil volume for attachments	l/m	110		
10-3	Hydraulic tank capacity	l	625		
10-4	Fuel tank capacity (1)	l	570-855		
10-4-1	DEF/AdBlue Tank capacity	l	N/A	57	
10-5	Steering design	Type	Hydraulic power steering		
10-6	Number of steering rotations	#	7.3		

(1) 855L for H40XD12, H44XD12 and H48XD12

NOTES:

Specifications are affected by the condition of the vehicle and how it is equipped, as well as the nature and condition of the operating area. Inform your dealer of the nature and condition of the intended operating area when purchasing your Hyster® truck. All capacities are according to EN1551.

NOTICE:

Care must be exercised when handling elevated loads. Operators must be trained and must read, understand and follow the instructions contained in the Operating Manual. All values are nominal values and they are subject to tolerances. For further information, please contact the manufacturer. Hyster products are subject to change without notice. Lift trucks illustrated may feature optional equipment. Values may vary with alternative configurations.

CERTIFICATION: Hyster lift trucks meet the design and construction requirements of B56.1-1969, per OSHA Section 1910.178(a)(2), and also comply with the B56.1 revision in effect at time of manufacture. Certification of compliance with the applicable ANSI standards appears on the lift truck. Performance specifications are for a truck equipped as described under Standard Equipment on this Technical Guide. Performance specifications are affected by the condition of the vehicle and how it is equipped, as well as by the nature, condition of the operating area, proper service and maintenance of the vehicle. If these specifications are critical, the proposed application should be discussed with your dealer.

NOTE: Specifications, unless otherwise listed, are for a standard truck without optional equipment. Specification data is based on VDI 2198.



Safety: Truck with Stage V engine conforms to the current EU and UK CA requirements.

FRONT END EQUIPMENT

RANGE OF 2 STAGE NFL MASTS	QUICK DISCONNECT PIN TYPE FORKS	QUICK DISCONNECT HOOK TYPE FORKS (SPED)
PIN TYPE CARRIAGE WITH INDEPENDENT FORK POSITIONER	PIN TYPE SIDE SHIFT FRAME CARRIAGE WITH INDEPENDENT FORK POSITIONER	HOOK TYPE DOUBLE FUNCTION SIDESHIFT CARRIAGE WITH INDIVIDUAL FORK POSITIONER (SPED)

PERFORMANCE	STD	OPT
Mercedes-Benz OM470 10.7L Stage V Diesel Engine	Stage V	
Cummins X12 11.8L Stage IIIA Diesel Engine	Stage IIIA	
Hydraulically driven on-demand cooling fan	X	
Powertrain protection system	X	
Heavy duty air intake	X	
Heavy duty air intake (raised)		X
High mount exhaust	X	
Spicer Off-Highway 5-speed auto-shifting transmission	X	
Kessler D102 Drive axle with wet disc brakes	X	
DRIVE	STD	OPT
Traction speed limiter - unconditional (adjustable)	X	
Traction speed limiter - loaded (adjustable)		X
18.00 - 25 40 Pneumatic Bias Tyres		X
18.00 - 25 40PR Pneumatic Bridgestone STMS Slick Bias Tyres		X
18.00 x 25 Pneumatic Goodyear Bias Tyres		X
18.00 x 25-40 Pneumatic, E4 Bias Tyres		X
18.00 x 25 Pneumatic Goodyear Slick Radial Tyres		X
18.00 x 25 Continental Container Master E4 Tyres	X	
Steer wheel lug nut protection	X	
Spare wheels and tyres		X
LIFT	STD	OPT
2 Stage Non Free Lift mast	X	
Mast tilt - 6° Forward / 10° Back	X	
Mast tilt - 15° Forward / 15° Back		X
Hydraulic Accumulator		X
Hydraulic system temperature protection with performance de-rate		X
Automatic Throttle-up when lifting (in neutral or inching)	X	
Mast Tilt Indicator - Mechanical		X
HANDLING	STD	OPT
Short Wheelbase (5385mm / 212")		X
Attachments for steel load handling		X
3150mm (124") QD Pin type carriage with individual fork positioning	X	
3150mm (124") QD Pin type integral sideshift carriage with individual fork positioning		X
3150mm (124") QD Hook type double function sideshift carriage with individual fork positioning		X
2440mm (96") length Pin type quick disconnect forks	X	
Pin type quick disconnect forks (various sizes)		X
Hook type quick disconnect forks (various sizes)		X
ERGONOMICS	STD	OPT
Enclosed Operator Cabin with Heating	X	
Enclosed Operator Cabin with Automatic Climate Control		X
Powered tilt operator compartment for service	X	
Isolated cabin mounting for low noise and vibration	X	
Operator presence system	X	
Mechanical suspension seat	X	
Air suspension seat		X
Deluxe air suspension seat		X
Low backrest seat	X	
High backrest seat		X
Armrest on left side	X	
Cloth seat cover		X
Vinyl seat cover	X	
Seat heating		X
Seat ventilation		X
2-point high visibility seatbelt	X	
Lateral seat sliding mechanism		X
Front, top and rear wipers	X	
"H"-pattern front wiper		X
"I"-pattern front wiper	X	
Front and rear window defrosters	X	
Right side door	X	
Wire mesh installed on top of operator compartment		X
7" Integrated Performance Display	X	
Touchpoint™ mini levers hydraulic control integrated in control arm	X	
Joystick hydraulic control integrated in control arm		X
Steering wheel with spinner knob	X	
Directional control lever on steering column		X
Standard directional on control switch	X	
Automatic park brake		X
Manual park brake	X	
Interior wide angle mirrors	X	
Heater with adjustable speed fan	X	
Telescoping & tilting steering column	X	
24-12 volt DC converter with 1 socket and 2 USB outlets		X
24-12 volt DC converter with 2 sockets and 2 USB outlets		X
Reading light		X


ERGONOMICS (continued)	STD	OPT
Sun shades on top and rear		X
Sun visors front window		X
Cloth trainer seat with 2-point seatbelt		X
Recirculation fan		X
Accessory mounting bracket on cab front right pillar		X
Document holder on cab front right pillar		X
Heated top- and/or rear window		X
Radio preparation with 2 speakers and antenna		X
VISIBILITY	STD	OPT
Top window with armoured glass	X	
Steel bars under armoured glass top window - enclosed operator cabin		X
Exterior mirrors mounted to handrails	X	
Rear view camera system		X
Radar object detection system		X
Halogen work lights		X
4 Halogen Work Lights Cab Mounted Front / 2 Halogen Cab Mounted Rear / 2 Halogen Drive Lights Front Fenders / 2 LED Rearward Cluster with Stop, Tail and Reverse Lights / Directional Lights on Front Fender & Rear Cluster	X	
4 Halogen Work Lights Cab Mounted Front / 2 Halogen Cab Mounted Rear / 4 Halogen Drive Lights Front Fenders / 2 LED Rearward Cluster with Stop, Tail and Reverse Lights / Directional Lights on Front Fender & Rear Cluster		X
4 LED Work Lights Cab Mounted Front / 2 LED Cab Mounted Rear / 2 LED Drive Lights Front Fenders / 2 LED Rearward Cluster with Stop, Tail and Reverse Lights / Directional Lights on Front Fender and Rear Cluster		X
4 LED Work Lights Cab Mounted Front / 2 LED Cab Mounted Rear / 4 LED Drive Lights Front Fenders / 2 LED Rearward Cluster with Stop, Tail and Reverse Lights / Directional Lights on Front Fender and Rear Cluster		X
4 HP LED Work Lights Cab Mounted Front / 2 HP LED Cab Mounted Rear / 2 LED Drive Lights Front Fenders / 2 LED Rearward Cluster with Stop, Tail and Reverse Lights / Directional lights on front fender and rear cluster		X
4 HP LED Work Lights Cab Mounted Front / 2 HP LED Cab Mounted Rear / 4 LED Drive Lights Front Fenders / 2 LED Rearward Cluster with Stop, Tail and Reverse Lights / Directional Lights on Front Fender and Rear Cluster		X
OPERATION	STD	OPT
Air horn 112 dBA	X	
Audible Alarm - Reverse direction activated 82-102dB(A), self adjusting	X	
Visible alarm - Amber strobe light, ignition activated	X	
Tyre pressure monitoring system		X
Air conditioning shut-off with open door		X
Lockable battery disconnect switch	X	
Battery jump start connector (NATO plug)		X
Truck start - Key switch with Button - Without Seatbelt Interlock	X	
Truck start - Key switch with Button - With Seatbelt Interlock - non-sequenced		X
Truck start - Key switch with Button - With Seatbelt Interlock - sequenced		X
Operator password (display) for Truck Start		X
Non-lockable fuel cap	X	
Lockable fuel cap		X
Hyster Tracker wireless asset management system	X	
Hyster Tracker wireless asset management - Access / Verification		X
Hyster Tracker wireless asset management - Monitoring		X
Auto greasing system for base truck		X
Centralised greasing provision for upper chain sheaves		X
24 volt electrical system	X	
APPEARANCE	STD	OPT
Hyster yellow paint base truck	X	
Special Colour		X
Operator compartment special paint (outside only)		X
Operator compartment special paint (complete cabin)		X
Hazard warning striping on counterweight		X
SUPPLEMENTAL	STD	OPT
Literature package	X	
Operator's manual	X	
CE certification	X	
Warranty: 24 months / 4,000 hours extended warranty	X	
Warranty: 12 months / 2,000 hours manufacturer's warranty		X

* Standard or optional in selected markets. Other options available through Special Products Engineering Department (SPED). Contact Hyster for details.



HYSTER EUROPE
Centennial House, Building 4.5, Frimley Business Park,
Frimley, Surrey, GU16 7SG, United Kingdom

Visit us online at www.hyster.com or call us at **+44 (0) 1276 538500**.

HYSTER-YALE UK LIMITED trading as Hyster Europe.
Registered Address: Centennial House, Building 4.5, Frimley Business Park, Frimley, Surrey GU16 7SG, United Kingdom.
Registered in England and Wales. Company Registration Number: 02636775.
© HYSTER-YALE UK LIMITED. 2023, all rights reserved. Hyster and  are trademarks of Hyster-Yale Group, Inc.
Hyster products are subject to change without notice. Trucks may be shown with optional equipment.



Safety: This truck conforms to the current EU and UK CA requirements