

WWW.HYSTER.COM

REACHSTACKER CONTAINER HANDLERS

PRODUCT BROCHURE

RS45



LOW TCO FOR PORT OPERATIONS

With 45-tonne lift capacity in the first row and 27/31 in the second row, the Hyster® RS45 ReachStacker is optimised for container handling operations. The intelligent design includes a right-sized engine, balanced chassis, and dedicated boom, putting weight and strength exactly where it needs to be.

- The combination of a lighter weight and smaller engine delivers up to 15% better fuel economy than larger displacement / higher powered engines.
- Lighter truck leads to longer tyre life.
- Extended service interval and easy service access combined with high parts commonality reduces overall maintenance cost.
- On-demand hydraulics and cooling technologies save fuel and extend component life.
- Available Hyster Tracker™ telematics solution gives you the data you need to operate your fleet efficiently.



WATCH VIDEO

HIGH OPERATION SPEEDS BOOST PRODUCTIVITY

When a container ship is at berth, time is money, and you need to be able to rely on your equipment to get the job done.

You'll be pleased with your cycle times while operating the RS45 container handler. The two-speed hoist system, combined with fast acceleration, significantly boosts unladen lift speed. With its right-sized engine and transmission inching offering great control during container stacking, it's sure to do the job quickly, and do it right.

The ReachStacker features an ELME 817 Innovation spreader, which is fast and efficient.

Your operator's comfort is also a factor in boosting productivity. The spacious cabin is ergonomically designed with intuitive controls positioned for efficient handling and convenience. The standard powered sliding cab allows your operator to choose an optimal forward vantage point with the push of a button.



- Mechanical (shown) or optional powered pile slope
- Optional power dampening options
- +/- 800mm side shift, +195° / -105° rotation and automatic twistlocks



- Low noise and vibration levels
- Choice of seat options
- Adjustable controls
- Convenient onboard digital operator display

DURABILITY COMES STANDARD

The RS45 container handler is designed and built by the same experienced team as our RS46 truck series. Therefore, you'll be getting the recognized Hyster® manufacturing quality and proven components from industry-leading suppliers, such as the QSL9 Tier 3/Stage IIIA Cummins engine, Kessler drive axle, Spicer Off-Highway TE-27 transmission, ELME 817 Innovation spreader and Danfoss hydraulics.

On-demand features help to lower the overall cost of ownership, by increasing component life and reducing service requirements. For example, the cooling fan operates only when required, reducing accessory loads on the powertrain, consuming less fuel and lowering noise levels. Additionally, the Hyster® on-demand load sensing hydraulic system delivers hydraulic oil only when required, helping to lower fuel consumption by up to 10% and extending component life.



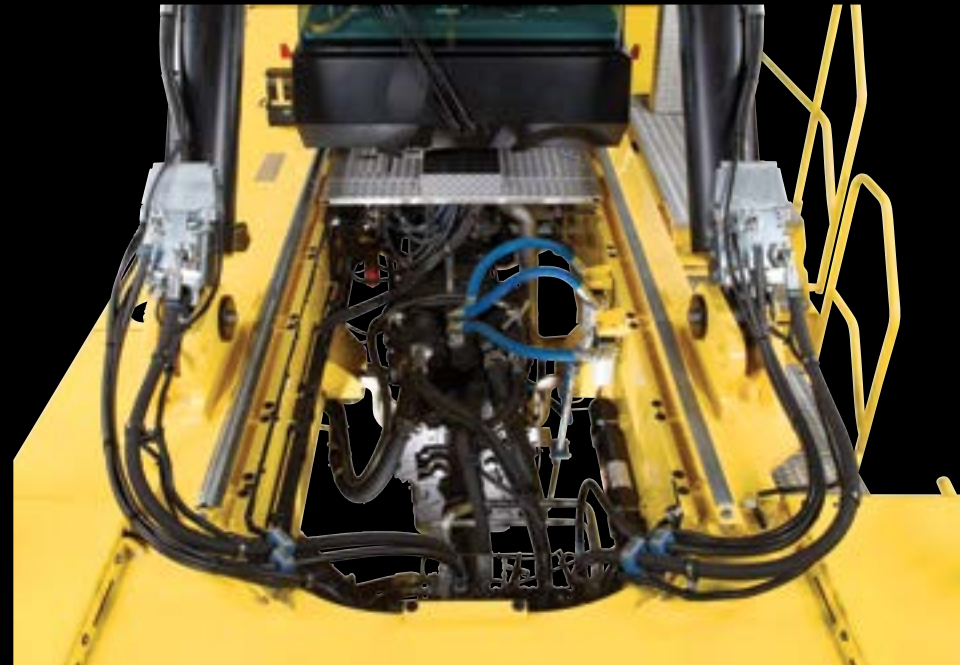
EASY SERVICE FOR MORE UPTIME

Designed with your service technician in mind, the Hyster® RS45 ReachStacker sports a smart truck layout for quick and easy service access.

- Operator cab slides forward and backward without the use of tools so your service technician can readily reach the components underneath.
- Hinged access covers make daily checks simple.
- All cooling system connection ports can be clearly reached from underneath the truck.
- Top deck plates are easily removed with quick disconnect latches.
- The CANbus truck and spreader controls enable fast and easy fault diagnosis.

Accessibility is not the only thing that makes your technician's job easier.

- Major engine and drivetrain components are engineered to operate on 500-hour service intervals.
- Extended hydraulic oil change intervals up to 3,000 hours (up to 10,000 hours with hydraulic fluid sampling)



WATCH VIDEO





HYSTER EUROPE


Centennial House, Frimley Business Park, Frimley, Surrey, GU16 7SG, England.
T: +44 (0) 01276 538500 | E: info@hyster.com | www.hyster.com

HYSTER EUROPE

HYSTER-YALE UK LIMITED trading as Hyster Europe.

Registered Address: Centennial House, Building 4.5, Frimley Business Park, Frimley, Surrey GU16 7SG, United Kingdom.

Registered in England and Wales. Company Registration Number: 02636775.

©2023 HYSTER YALE UK LIMITED. all rights reserved. HYSTER, , and STRONG PARTNERS. TOUGH TRUCKS. are trade marks of HYSTER-YALE Group, Inc. Hyster products are subject to change without notice. Forklift trucks illustrated may be shown with optional equipment.

